

Maximum 2222 kW (2980 hp) @2100 RPM (PLEASURE CRAFT)

STANDARD EQUIPMENT

MG-6984SC

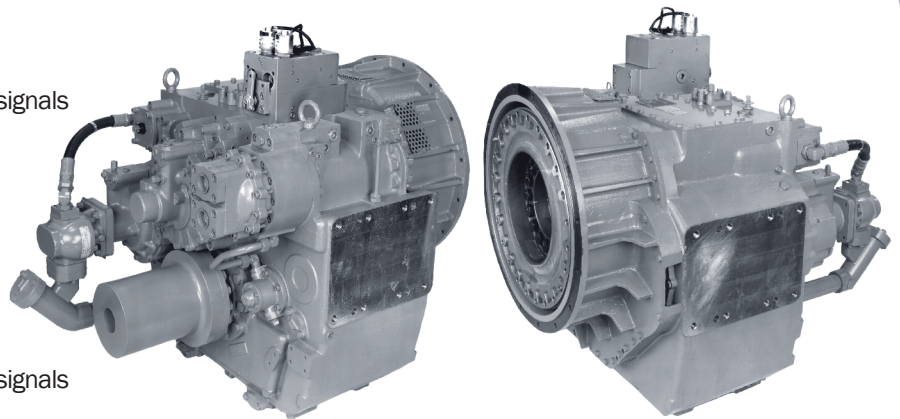
- Vertical offset, aluminum housing
- Electric GP-valve with manual override
- EC050 Profile module – interface for engagement signals
- Integral oil cooler for raw water cooling
- Oil strainer and oil filter

MG-6984A

- Vertical offset, aluminum housing
- 10° down angle on output shaft
- Electric GP-valve with manual override
- EC050 Profile module – interface for engagement signals
- Integral oil cooler for raw water cooling
- Oil strainer and oil filter

MG-6984RV

- Remote V-drive, aluminum housing
- 10° down angle on output shaft
- Input flange
- Electric GP-valve with manual override
- EC050 Profile module – interface for engagement signals
- Integral oil cooler for raw water cooling
- Oil strainer and oil filter



INPUT RATINGS - KILOWATS (KW) (HORSEPOWER (HP))*

For service classification definitions and important notes refer to www.twindisc.com, the Twin Disc Marine Product Guide or contact Twin Disc directly.

MG-6984SC

Reduction Ratios :1	Pleasure Craft @ 2100 RPM	Light Duty @ 2100 RPM	Intermediate Duty @ 1800 RPM	Medium Duty @ 1800 RPM	Continuous Duty @ 1800 RPM
1.18, 1.54, 2.06 2.29, 2.52	2222 kW (2980 hp)	2119 kW (2842 hp)	1654 kW (2218 hp)	1353 kW (1814 hp)	1326 kW (1778 hp)
2.92	2163 kW (2900 hp)	2006 kW (2690 hp)			
3.25	1924 kW (2580 hp)	1665 kW (2233 hp)	1399 kW (1876 hp)	1227 kW (1645 hp)	1200 kW (1609 hp)
3.43	1790 kW (2400 hp)	1549 kW (2077 hp)	1125 kW (1509 hp)	924 kW (1239 hp)	903 kW (1211 hp)

MG-6984A & MG-6984RV

Reduction Ratios :1	Pleasure Craft @ 2100 RPM	Light Duty @ 2100 RPM	Intermediate Duty @ 1800 RPM	Medium Duty @ 1800 RPM	Continuous Duty @ 1800 RPM
1.48 1.97	2222 kW (2980 hp)	2102 kW (2819 hp)	1692 kW (2269 hp)	1384 kW (1856 hp)	1356 kW (1818 hp)
2.50		2037 kW (2732 hp)			
2.79	2207 kW (2960 hp)	2016 kW (2703 hp)	1645 kW (2206 hp)	1330 kW (1784 hp)	1301 kW (1745 hp)
2.93	2155 kW (2890 hp)	1984 kW (2661 hp)			



* Ratings shown for use with standard right-hand rotation engines. The maximum allowable rated engine speed is 2100 rpm.

Specifications subject to change without prior notice in the interest of continual product improvement. Contact your local Twin Disc representative for engineering specifications, Survey Society Approvals and Classifications.

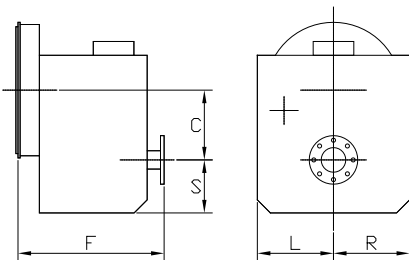
Scan QR code to see Twin Disc's entire Marine product line.



OPTIONS

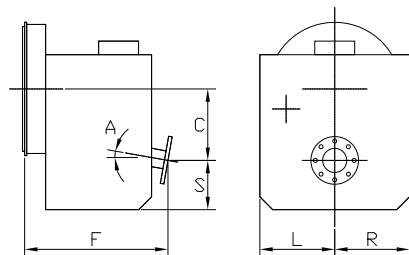
	MG-6984SC	MG-6984A	MG-6984RV
SAE J617 housing no. 0	X	X	
SAE J617 housing no. 00	X	X	
Flexible coupling for 18" flywheel (SAE J620 size 460)	X	X	
Flexible coupling for 21" flywheel (SAE J620 size 530)	X	X	
Input flange for freestanding installation	X	X	standard
ECO50 E-Troll module			
– interface for engagement & trolling signals	X	X	X
Harness with single point interface			
to Twin Disc EC300 control system	X	X	X
Output shaft driven trailing pump	X	X	X
Companion flange/ bolts set	X	X	X
Monitoring devices to customer's specification	X	X	X
Mounting brackets	X	X	X
Live PTO			
SAE J744 size 127-4, 32-4 (SAE "C", 4-bolt)			
– max. 600 Nm	X	X	X
Hydraulic Clutchable PTO			
SAE J744 size 127-4, 32-4 (SAE "C", 4-bolt)			
– max. 600 Nm	X	X	X
Dry weight incl. SAE #0 housing and SAE 460 flexible coupling	1192 kg	905 kg	910 kg

MG-6984SC



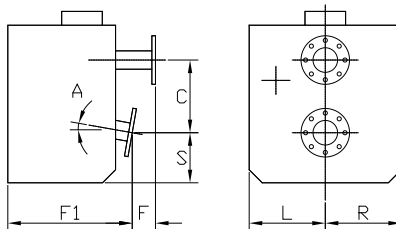
C	310 mm (12.21")
S	287 mm (11.30")
F	691 mm (27.20")
L	445 mm (17.52")
R	445 mm (17.52")

MG-6984A



C	382 mm (15.04")
S	216 mm (8.50")
F	684 mm (26.93")
L	445 mm (17.52")
R	445 mm (17.52")
A	10°

MG-6984RV



C	382 mm (15.04")
S	216 mm (8.50")
F	300 mm (11.82")
F1	784 mm (30.86")
L	445 mm (17.52")
R	445 mm (17.52")
A	10°

Twin Disc, Incorporated reminds users of these products that their safe operation depends on use in compliance with engineering information provided in our catalog. Users are also reminded that safe operation depends on proper installation, operation and routine maintenance and inspection under prevailing conditions. It is the responsibility of users (and not Twin Disc, Incorporated) to provide and install guards or safety devices which may be required by recognized safety standards or by the Occupational Safety and Health Act of 1970 and its subsequent provisions.

United States of America • Australia • Belgium • Canada • China • India • Italy • Singapore • Switzerland

For nearly a century, we've been making boats perform better and more reliably. From system-design consultation to application development to in-service support, Twin Disc provides fully integrated propulsion solutions that will optimize your craft's performance, reliability and safety over the years. Bring Twin Disc aboard early in the development process, and you'll enjoy a lifetime of enhanced operating value.

TRANSMISSIONS • ELECTRONIC CONTROLS • EXPRESS JOYSTICK SYSTEM® • SAILDRIVES • EXPRESS POSITIONING® • ARNESON SURFACE DRIVES • MARINE CONTROL DRIVES • ROLLA PROPELLERS • BOW & STERN THRUSTERS • STEERING SYSTEMS • RUDDERS • TRIM TABS



Twin Disc, Incorporated
Racine, Wisconsin 53403 USA
Phone +1-262-638-4000
Fax +1-262-638-4482
www.twindisc.com

TD-Bulletin-MG-6984_Series
© 2016, Twin Disc, Incorporated
Printed in the USA - 1/2016