

**MGX-5086 SERIES**

**MAXIMUM 530 KW (710 HP)  
@ 2300 RPM (PLEASURE CRAFT)**

**STANDARD EQUIPMENT****MGX-5086SC/MGX-5086A**

- Near coaxial, aluminum housing
- Electric GP-valve with manual override
- EC600PC profile module – interface for engagement signals
- Oil strainer and oil filter

**MGX-5086A**

- 7° down angle on output shaft

**QUICKSHIFT®**  
BY TWIN DISC

**INPUT RATINGS**

| Reduction Ratios :1 |  | Pleasure Craft<br>@ 2500 RPM | Light Duty<br>@ 2300 RPM | Intermediate Duty<br>@ 2100 RPM | Medium Duty<br>@ 1800 RPM | Continuous Duty<br>@ 1800 RPM |
|---------------------|--|------------------------------|--------------------------|---------------------------------|---------------------------|-------------------------------|
| <b>MGX-5086SC</b>   | 1.06, 1.11, 1.33<br>1.53, 1.77, 2.05<br>2.28 | 530 kW (710 hp)              | 460 kW (617 hp)          | 351 kW (471 hp)                 | 301 kW (404 hp)           | 262 kW (351 hp)               |
|                     | 2.53   | 492 kW (660 hp)              |                          |                                 |                           |                               |
|                     | 2.88   | 447 kW (600 hp)              |                          |                                 |                           |                               |
| <b>MGX-5086A</b>    | 1.06, 1.33, 1.53<br>1.77, 2.05, 2.28         | 530 kW (710 hp)              | 460 kW (617 hp)          | 351 kW (471 hp)                 | 301 kW (404 hp)           | 262 kW (351 hp)               |
|                     | 2.53   | 492 kW (660 hp)              |                          |                                 |                           |                               |
|                     | 2.88   | 447 kW (600 hp)              |                          |                                 |                           |                               |

For service classification definitions and important notes refer to the Twin Disc Marine Product Guide or contact Twin Disc directly. Ratings shown for use with standard right hand rotation engines. The maximum allowable rated engine speed is 3200 rpm.

**EC600PC ELECTRONIC PROPULSION CONTROL SYSTEM**

- Optional equipment: display and joystick

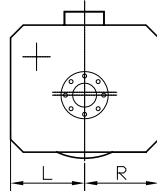
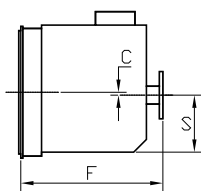


## OPTIONAL EQUIPMENT

### MGX-5086SC/MGX-5086A

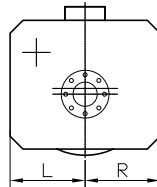
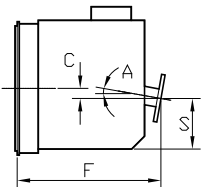
- SAE J617 housing no. 1
- SAE J617 housing no. 2
- Flexible coupling for 14" flywheel (SAE J620 size 355)
- Flexible coupling for 11.5" flywheel (SAE J620 size 290)
- EC600PC e-troll module and propulsion control system
- Oil cooler with thermostatic bypass valve
- Companion flange/bolts set
- Monitoring devices to customer's specification
- Mounting brackets
- Live PTO:
  - SAE J744 size 82-2, 16-4 (SAE "A", 2-bolt) – max. 58 Nm
  - SAE J744 size 101-2/4, 22-4 (SAE "B", 2/4-bolt) – max. 197 Nm
  - SAE J744 size 101-2/4, 25-4 (SAE "B-B", 2/4-bolt) – max. 337 Nm
- Dry weight including SAE no. 1 housing and SAE 355 flexible coupling: 135 kg

### MGX-5086SC



|   |                 |
|---|-----------------|
| C | 15 mm (0.59")   |
| S | 178 mm (7.00")  |
| F | 413 mm (16.24") |
| L | 254 mm (10.00") |
| R | 254 mm (10.00") |

### MGX-5086A



|   |                 |
|---|-----------------|
| C | 54 mm (2.12")   |
| S | 178 mm (7.00")  |
| F | 405 mm (15.97") |
| L | 254 mm (10.00") |
| R | 254 mm (10.00") |
| A | 7°              |

Since 1918, we've been putting horsepower to work by designing, engineering and manufacturing rugged-duty industrial products. Our products and our reputation are bolted to the most renowned engine manufacturers and equipment OEMs in the world. Our mission is to make boats, machines and off-highway vehicles more productive, more durable, more operator-friendly, and more cost-effective. From design and installation consultation through after-sale support, Twin Disc and its distributors are committed to your business. No one knows more about managing horsepower in more ways than Twin Disc.

#### TRANSMISSIONS

#### ELECTRONIC CONTROLS

#### EXPRESS JOYSTICK SYSTEM®

#### SAILDRIVES

#### EXPRESS POSITIONING®

#### ARNESON® SURFACE DRIVES

#### MARINE CONTROL DRIVES

#### ROLLA™ PROPELLERS

#### THRUSTERS

#### VETH PROPULSION SYSTEMS

#### STEERING SYSTEMS

#### RUDDERS

#### TRIM TABS

#### PUMP DRIVES

#### PTOS

Twin Disc, Incorporated reminds users of these products that their safe operation depends on use in compliance with engineering information provided in our product guides, installation/assembly drawings and/or manuals. Users are also reminded that safe operation depends on proper installation, operation and routine maintenance and inspection under prevailing conditions. It is the responsibility of users (and not Twin Disc, Incorporated) to provide and install guards or safety devices which may be required by recognized safety standards or by the Occupational Safety and Health Act of 1970 and its subsequent provisions.

USA • AUSTRALIA • BELGIUM • CHINA • INDIA • ITALY • NETHERLANDS • SINGAPORE • SWITZERLAND



Twin Disc, Incorporated  
 Racine, Wisconsin 53403 USA  
 Phone +1-262-638-4000  
 Fax +1-262-638-4482  
[www.twindisc.com](http://www.twindisc.com)

2102\_Bulletin\_MGX-5086\_Series  
 © 2021, Twin Disc, Incorporated  
 Printed in the USA