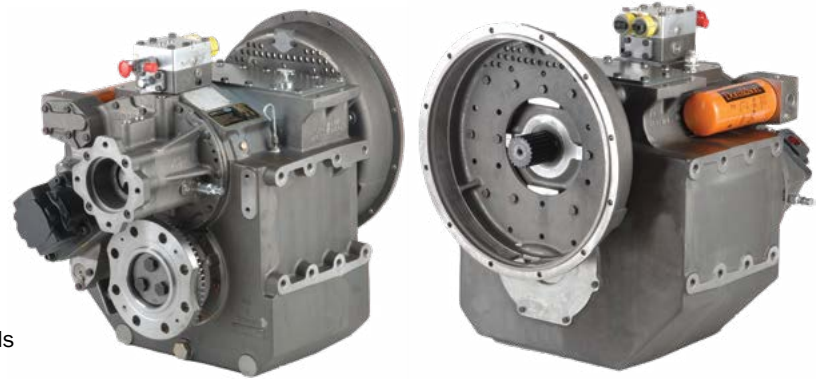


**MGX-5202SC**

**MAXIMUM 969 KW (1300 HP)  
@ 2300 RPM (PLEASURE CRAFT)**



**STANDARD EQUIPMENT**

- Vertical offset, cast iron housing
- Electric GP-valve with manual override
- EC600PC profile module – interface for engagement signals
- Oil strainer and oil filter



**INPUT RATINGS**

Reduction Ratios :1	Pleasure Craft @ 2300 RPM	Light Duty @ 2300 RPM	Intermediate Duty @ 2100 RPM	Medium Duty @ 1800 RPM	Continuous Duty @ 1800 RPM
1.17, 1.33, 1.53 1.76, 2.03, 2.48 2.92	969 kW (1300 hp)	924 kW (1239 hp)	720 kW (966 hp)	600 kW (805 hp)	600 kW (805 hp)
3.48	800 kW (1073 hp)	789 kW (1058 hp)			

*For service classification definitions and important notes refer to the Twin Disc Marine Product Guide or contact Twin Disc directly.  
Ratings shown for use with standard right hand rotation engines.  
The maximum allowable rated engine speed is 2750 rpm (2500 rpm for ratio 1.17:1).*

**EC600PC ELECTRONIC PROPULSION CONTROL SYSTEM**

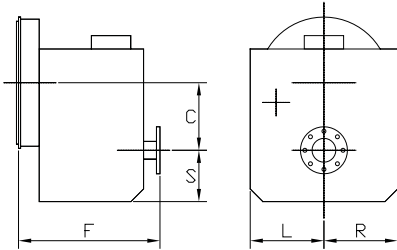
- Optional equipment: display and joystick



## OPTIONAL EQUIPMENT

- SAE J617 housing no. 1
- SAE J617 housing no. 0
- Flexible coupling for 14" flywheel (SAE J620 size 355)
- Flexible coupling for 18" flywheel (SAE J620 size 460)
- Input hub for freestanding installation
- Mechanical control valve
- EC600PC e-troll module and propulsion control system
- Oil cooler for raw and fresh water cooling
- Companion flange/bolts set
- Monitoring devices to customer's specification
- Mounting brackets
- Live PTO
  - SAE J744 size 127-2/4, 32-4 (SAE "C", 2/4-bolt) – max. 592 Nm
  - SAE J744 size 127-2/4, 38-4 (SAE "C-C", 2/4-bolt) – max. 1187 Nm
- Hydraulic clutchable pump mount PTO
  - SAE J744 size 127-2/4, 32-4 (SAE "C", 2/4-bolt) – max. 592 Nm
  - SAE J744 size 127-2/4, 38-4 (SAE "C-C", 2/4-bolt) – max. 1186 Nm
- Dry weight including SAE no. 1 housing and SAE 355 flexible coupling: 580 kg

## MGX-5202SC



C	248 mm (9.75")
S	222 mm (8.75")
F	595 mm (23.41")
L	375 mm (14.75")
R	267 mm (10.50")

Since 1918, we've been putting horsepower to work by designing, engineering and manufacturing rugged-duty industrial products. Our products and our reputation are bolted to the most renowned engine manufacturers and equipment OEMs in the world. Our mission is to make boats, machines and off-highway vehicles more productive, more durable, more operator-friendly, and more cost-effective. From design and installation consultation through after-sale support, Twin Disc and its distributors are committed to your business. No one knows more about managing horsepower in more ways than Twin Disc.

TRANSMISSIONS

ELECTRONIC CONTROLS

EXPRESS JOYSTICK SYSTEM®

SAILDRIVES

EXPRESS POSITIONING\*

ARNESON® SURFACE DRIVES

MARINE CONTROL DRIVES

ROLLA™ PROPELLERS

THRUSTERS

VETH PROPULSION SYSTEMS

STEERING SYSTEMS

RUDDERS

TRIM TABS

PUMP DRIVES

PTOS

Twin Disc, Incorporated reminds users of these products that their safe operation depends on use in compliance with engineering information provided in our product guides, installation/assembly drawings and/or manuals. Users are also reminded that safe operation depends on proper installation, operation and routine maintenance and inspection under prevailing conditions. It is the responsibility of users (and not Twin Disc, Incorporated) to provide and install guards or safety devices which may be required by recognized safety standards or by the Occupational Safety and Health Act of 1970 and its subsequent provisions.

USA • AUSTRALIA • BELGIUM • CHINA • INDIA • ITALY • NETHERLANDS • SINGAPORE • SWITZERLAND



Twin Disc, Incorporated  
 Racine, Wisconsin 53403 USA  
 Phone +1-262-638-4000  
 Fax +1-262-638-4482  
[www.twindisc.com](http://www.twindisc.com)

2102\_Bulletin\_MGX-5202SC  
 © 2021, Twin Disc, Incorporated  
 Printed in the USA