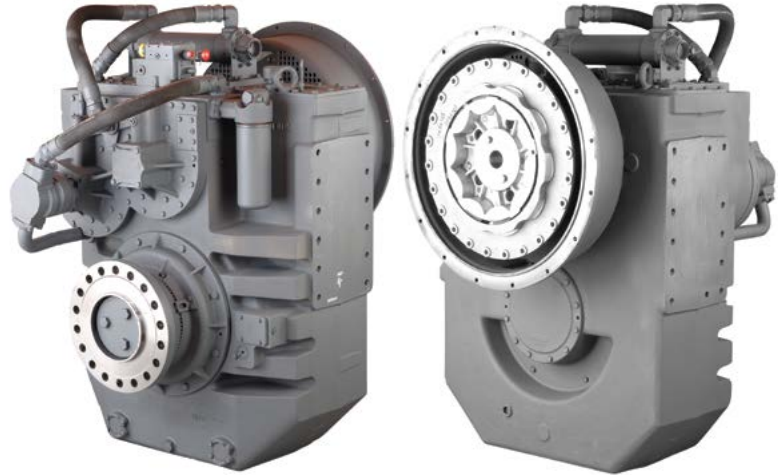


MGX-5600

**MAXIMUM 1760 KW (2360 HP)
@ 1800 RPM (CONTINUOUS DUTY)**

STANDARD EQUIPMENT

- Vertical offset, cast iron housing
- Electric GP-valve with manual override
- EC600PC profile module – interface for engagement signals
- Mounted oil cooler for raw or fresh water cooling
- Oil strainer and oil filter
- Companion flange/bolts set



QUICKSHIFT®
BY TWIN DISC

INPUT RATINGS

Reduction Ratios :1	Intermediate Duty		Medium Duty		Continuous Duty	
	@ 1800 RPM	@ 2100 RPM	@ 1600 RPM	@ 1800 RPM	@ 1600 RPM	@ 1800 RPM
2.53, 2.98 3.51, 4.03	1805 kW (2421 hp)	2105 kW (2823 hp)	1598 kW (2143 hp)	1760 kW (2360 hp)	1575 kW (2112 hp)	1760 kW (2360 hp)
4.63, 5.04		2095 kW (2809 hp)				
5.76	1760 kW (2360 hp)	1770 kW (2374 hp)	1566 kW (2100 hp)	1737 kW (2329 hp)	1566 kW (2100 hp)	1737 kW (2329 hp)
6.04	1502 kW (2014 hp)	1717 kW (2302 hp)	1309 kW (1755 hp)	1451 kW (1946 hp)	1271 kW (1704 hp)	1410 kW (1891 hp)

For service classification definitions and important notes refer to the Twin Disc Marine Product Guide or contact Twin Disc directly. Ratings shown for use with standard right hand rotation engines. The maximum allowable rated engine speed is 2100 rpm.

EC600PC ELECTRONIC PROPULSION CONTROL SYSTEM

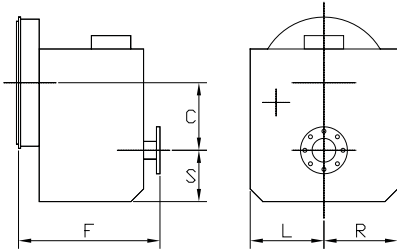
- Optional equipment: display and joystick



OPTIONAL EQUIPMENT

- SAE J617 housing no. 0
- SAE J617 housing no. 00
- Flexible coupling for 18" flywheel (SAE J620 size 460)
- Flexible coupling for 21" flywheel (SAE J620 size 530)
- Input hub for freestanding installation
- Hydraulically-operated internal shaft brake
- Mechanical control valve
- EC600PC e-troll module and propulsion control system
- Output shaft-driven trailing pump
- Special companion flange/bolts set for shaft brake application
- Monitoring devices to customer's specification
- Mounting brackets
- Live PTO
 - SAE J744 size 127-2/4, 32-4 (SAE "C", 2/4-bolt) – max. 592 Nm
 - SAE J744 size 127-2/4, 38-4 (SAE "C-C", 2/4-bolt) – max. 1187 Nm
- Hydraulic clutchable pump mount PTO
 - SAE J744 size 127-2/4, 32-4 (SAE "C", 2/4-bolt) – max. 600 Nm
 - SAE J744 size 127-2/4, 38-4 (SAE "C-C", 2/4-bolt) – max. 1186 Nm
- Dry weight including SAE no. 0 housing and SAE 460 flexible coupling: 3132 kg

MGX-5600



C	550 mm (21.65")
S	540 mm (21.26")
F	1026 mm (40.39")
L	525 mm (20.67")
R	525 mm (20.67")

Since 1918, we've been putting horsepower to work by designing, engineering and manufacturing rugged-duty industrial products. Our products and our reputation are bolted to the most renowned engine manufacturers and equipment OEMs in the world. Our mission is to make boats, machines and off-highway vehicles more productive, more durable, more operator-friendly, and more cost-effective. From design and installation consultation through after-sale support, Twin Disc and its distributors are committed to your business. No one knows more about managing horsepower in more ways than Twin Disc.

TRANSMISSIONS

ELECTRONIC CONTROLS

EXPRESS JOYSTICK SYSTEM®

SAILDRIVES

EXPRESS POSITIONING®

ARNESON® SURFACE DRIVES

MARINE CONTROL DRIVES

ROLLA™ PROPELLERS

THRUSTERS

VETH PROPULSION SYSTEMS

STEERING SYSTEMS

RUDDERS

TRIM TABS

PUMP DRIVES

PTOS



Twin Disc, Incorporated
 Racine, Wisconsin 53403 USA
 Phone +1-262-638-4000
 Fax +1-262-638-4482
www.twindisc.com

Twin Disc, Incorporated reminds users of these products that their safe operation depends on use in compliance with engineering information provided in our product guides, installation/assembly drawings and/or manuals. Users are also reminded that safe operation depends on proper installation, operation and routine maintenance and inspection under prevailing conditions. It is the responsibility of users (and not Twin Disc, Incorporated) to provide and install guards or safety devices which may be required by recognized safety standards or by the Occupational Safety and Health Act of 1970 and its subsequent provisions.

USA • AUSTRALIA • BELGIUM • CHINA • INDIA • ITALY • NETHERLANDS • SINGAPORE • SWITZERLAND

2102_Bulletin_MGX-5600
 © 2021, Twin Disc, Incorporated
 Printed in the USA