

MGX-6599 SERIES

**MAXIMUM 1452 KW (1947 HP)
@ 2300 RPM (PLEASURE CRAFT)**

STANDARD EQUIPMENT

MGX-6599SC/MGX-6599A/MGX-6599RV

- Electric GP-valve with manual override
- EC600PC profile module – interface for engagement signals
- Integral oil cooler for raw water cooling
- Oil strainer and oil filter

MGX-6599SC

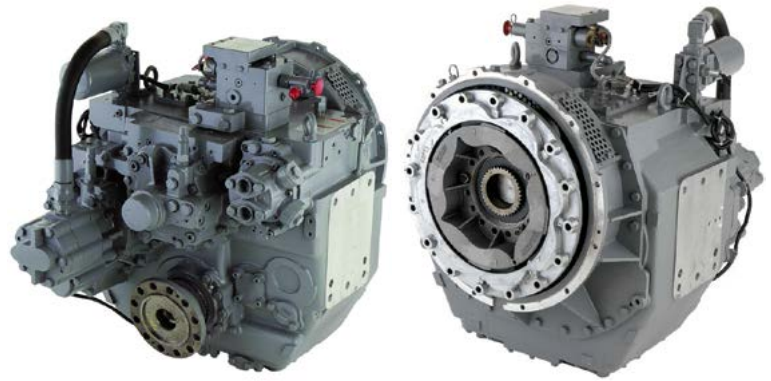
- Vertical offset, aluminum housing

MGX-6599A

- Vertical offset, aluminum housing
- 10° down angle on output shaft

MGX-6599RV

- Remote V-drive, aluminum housing
- 10° down angle on output shaft
- Input flange GWB 587.50



INPUT RATINGS

Reduction Ratios :1		Pleasure Craft @ 2300 RPM	Light Duty @ 2300 RPM	Intermediate Duty @ 2100 RPM	Medium Duty @ 1800 RPM	Continuous Duty @ 1800 RPM
MGX-6599SC	1.07, 1.30 1.50, 1.66	1452 kW (1947 hp)	1244 kW (1668 hp)	960 kW (1287 hp)	774 kW (1038 hp)	744 kW (998 hp)
	1.74	1418 kW (1902 hp)				
	1.97, 2.04		1164 kW (1561 hp)	668 kW (896 hp)		728 kW (976 hp)
	2.19	1042 kW (1397 hp)	811 kW (1088 hp)			
	2.45	1156 kW (1550 hp)	1042 kW (1397 hp)	811 kW (1088 hp)	668 kW (896 hp)	624 kW (837 hp)
MGX-6599A/ MGX-6599RV	1.34, 1.51, 1.74 2.03, 2.24	1418 kW (1902 hp)	1301 kW (1745 hp)	992 kW (1330 hp)	820 kW (1100 hp)	767 kW (1029 hp)
	2.48	1343 kW (1801 hp)	1195 kW (1602 hp)	937 kW (1257 hp)	772 kW (1035 hp)	728 kW (976 hp)
	2.80	1156 kW (1550 hp)	1144 kW (1534 hp)	908 kW (1218 hp)	709 kW (951 hp)	699 kW (937 hp)

For service classification definitions and important notes refer to the Twin Disc Marine Product Guide or contact Twin Disc directly. Ratings shown for use with standard right hand rotation engines. The maximum allowable rated engine speed is 2500 rpm.

EC600PC ELECTRONIC PROPULSION CONTROL SYSTEM

- Optional equipment: display and joystick



OPTIONAL EQUIPMENT

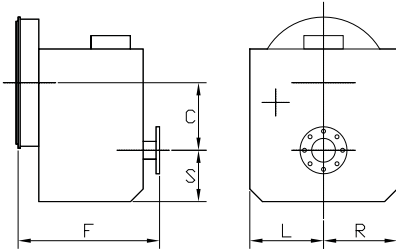
MGX-6599SC/MGX-6599A/MGX-6599RV

- EC600PC e-troll module and propulsion control system
- Output shaft-driven trailing pump
- Companion flange/bolts set
- Monitoring devices to customer's specification
- Mounting brackets
- Live PTO: SAE J744 size 127-4, 32-4 (SAE "C", 4-bolt) – max. 600 Nm
- Hydraulic clutchable PTO: SAE J744 size 127-4, 32-4 (SAE "C", 4-bolt) – max. 600 Nm
- Secondary live PTO for power steering pumps:
SAE J744 size 101-2, 22-4 (SAE "B", 2-bolt) – max. 75 Nm
SAE J744 size 82-2, 16-4 (SAE "A", 2-bolt) – max. 75 Nm

MGX-6599SC/MGX-6599A ONLY

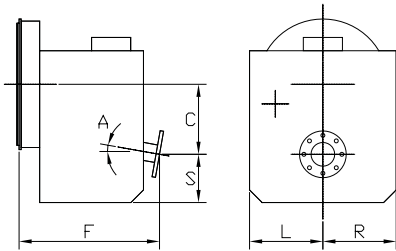
- SAE J617 housing no. 1
- SAE J617 housing no. 0
- Flexible coupling for 14" flywheel (SAE J620 size 355)
- Flexible coupling for 18" flywheel (SAE J620 size 460)
- Input flange for freestanding installation (*standard on MGX-6599RV*)

MGX-6599SC



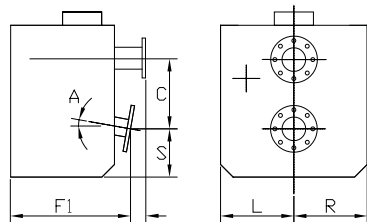
C	229 mm (9.00")
S	227 mm (8.95")
F	592 mm (23.31")
L	340 mm (13.39")
R	340 mm (13.39")
Weight*	492 kg

MGX-6599A



C	297 mm (11.70")
S	159 mm (6.25")
F	574 mm (22.60")
L	340 mm (13.39")
R	340 mm (13.39")
A	10°
Weight*	488 kg

MGX-6599RV



C	297 mm (11.70")
S	159 mm (6.25")
F	162 mm (6.38")
F1	516 mm (20.31")
L	340 mm (13.39")
R	340 mm (13.39")
A	10°
Weight*	468 kg

*Dry weight including SAE no. 1 housing and SAE 355 flexible coupling

Twin Disc, Incorporated reminds users of these products that their safe operation depends on use in compliance with engineering information provided in our product guides, installation/assembly drawings and/or manuals. Users are also reminded that safe operation depends on proper installation, operation and routine maintenance and inspection under prevailing conditions. It is the responsibility of users (and not Twin Disc, Incorporated) to provide and install guards or safety devices which may be required by recognized safety standards or by the Occupational Safety and Health Act of 1970 and its subsequent provisions.

USA • AUSTRALIA • BELGIUM • CHINA • INDIA • ITALY • NETHERLANDS • SINGAPORE • SWITZERLAND

Since 1918, we've been putting horsepower to work by designing, engineering and manufacturing rugged-duty industrial products. Our products and our reputation are bolted to the most renowned engine manufacturers and equipment OEMs in the world. Our mission is to make boats, machines and off-highway vehicles more productive, more durable, more operator-friendly, and more cost-effective. From design and installation consultation through after-sale support, Twin Disc and its distributors are committed to your business. No one knows more about managing horsepower in more ways than Twin Disc.

TRANSMISSIONS

ELECTRONIC CONTROLS

EXPRESS JOYSTICK SYSTEM*

SAILDRIVES

EXPRESS POSITIONING*

ARNESON® SURFACE DRIVES

MARINE CONTROL DRIVES

ROLLA™ PROPELLERS

THRUSTERS

VETH PROPULSION SYSTEMS

STEERING SYSTEMS

RUDDERS

TRIM TABS

PUMP DRIVES

PTOS



Twin Disc, Incorporated
Racine, Wisconsin 53403 USA

Phone +1-262-638-4000

Fax +1-262-638-4482

www.twindisc.com

2102_Bulletin_MGX-6599_Series

© 2021, Twin Disc, Incorporated

Printed in the USA